

Well after screwing around with the old Norcold refrigerator for the past 2 years I finally decided to search for a replacement. I looked at the Wal-Mart offerings but just did not like the look and feel of the Haier or the Avanti. I did find a Danby that looked promising but it had a work surface top that was just too big and all of them would require loosing the drawer and that thing is so full of junk I would have to add on an addition to store all that stuff in. After much searching I came across the WAECO 122volt/110volt 2.8cf refrigerator/freezer. The perfect replacement it works on 12 volts with out an inverter and changes over automatically when you plug in the 110 shore power. The only drawback was the Price \$999.99 OUCH but you can always find it cheaper on the internet found it here

www.boatandrvaccessories.com/CR-80.htm for 30% OFF! WOOOOOOHOOOOO.

So I ordered it and about 4 days later it arrived. This unit is fantastic it includes the following....



WAECO COOLMATIC 2.8 CUBIC FEET 12/24 VOLTS DC & 110 / 220 VOLTS AC BUILT-IN REFRIGERATOR-FREEZER WITH FLUSH MOUNT FRAME

- **12/24 VOLTS DC & 110 / 220 VOLTS AC**
- **BEYOND PLEASING AESTHETICS, THE NEW CR COMPRESSOR REFRIGERATORS OFFER SEVERAL CLEVER DESIGN TOUCHES, INCLUDING A LOCK TO ALLOW THE CABINET TO VENTILATE WHEN NOT IN USE AND A VERY POSITIVE LATCHING MECHANISM**

- **CHOICE OF INTERCHANGEABLE OUTSIDE FACE PANELS: BLACK OR WHITE**
- **REFRESHING WHITE INTERIOR WITH COOL-BLUE LIGHT**
- **SECURE SELF-LOCKING DOOR**
- **DANFOSS BD35F COMPRESSOR**
- **FULL LENGTH HANDLE IS RECESSED INTO THE FRIDGE DOOR**
- **REVERSIBLE DOOR OPENING**
- **DOOR HAS MAGNETIC SEAL**
- **METAL FRAME CONSTRUCTION AND STAINLESS STEEL HARDWARE**
- **STANDARD FEATURES INCLUDE EGG TRAY, BOTTLE HOLDER, ESTE LARGE VEGETABLE BIN, VERSATILE REPOSITIONABLE SHELVES AND RACKS**
- **SEPARATE FULL-WIDTH FREEZER COMPARTMENT WITH INSULATED DOOR-0°F IS RELIABLY MAINTAINED EVEN AT OUTSIDE TEMPERATURES UP TO 100°F**
- **PROTECTED EVAPORATOR ELIMINATES RISK OF ICE-PICK DAMAGE**
- **COLLECTION TRAY TO CAPTURE DEFROST WATER**
- **EXTREMELY QUIET RUNNING**
- **2 YEAR WARRANTY**

GROSS CAPACITY: 2.8 CUBIC FEET / 4.8 QUARTS IN THE FREEZER COMPARTMENT

VOLTAGE: 12/24 VOLTS DC & 110 / 220 VOLTS AC

AVERAGE POWER CONSUMPTION: 40 WATTS

AVERAGE RUNNING TIME: 30% AT 68°F AMBIENT TEMPERATURE, 45% AT 86°F AMBIENT TEMPERATURE, BOTH AT 41°F INTERIOR TEMPERATURE

POWER CONSUMPTION: POWER INPUT X AVERAGE RUNNING TIME

INSULATION: CFC-FREE POLYURETHANE

SYSTEM: FULLY HERMETIC DANFOSS BD35F COMPRESSOR WITH INTEGRATED CONTROL ELECTRONICS, LOW-VOLTAGE PROTECTION,

ELECTRONIC FUSE/AUTOMATIC REVERSE POLE PROTECTION, ALUMINUM ROLLBOND EVAPORATOR, MECHANICAL, CONTINUOUSLY, VARIABLE THERMOSTAT, DYNAMICALLY VENTILATED WIRE CONDENSER

MATERIAL:	STAINLESS STEEL FITTINGS, PLASTIC INTERIOR, DOOR FRAME IN PLASTIC BODY WITH COATED METAL FRAME
COLOR FOR GALLEY	BLACK FACE PANEL, BLACK DOOR SURROUND, BLACK FLUSH MOUNT FRAME
CUT-OUT DIMENSIONS:	18.75"W X 24.75"H X 20.5"D
WEIGHT:	52 LBS
QUALITY FEATURES:	INTERIOR LIGHT, DOOR WITH MAGNETIC SEAL, VARIABLE DOOR HINGES AND LOCKS (RIGHT/LEFT), DOOR WITH DOUBLE-LOCK (TOP/BOTTOM) AND DUAL FUNCTION (LOCKING/VENTILATION)
ITEM DESIGNATION:	CR-1080U/F
ACCESSORY :	DEPTH-SAVER FRAME, ITEM #EST-1080U \$59.99

All that was left was to shoehorn this little jewel into the motor home. The old Norcold was 25 inches wide and 24 inches high and about 19 inches deep. The new unit is 18 ¾ inches wide 24 ¾ and 20 ½ inches deep so some minor modifications were required to the opening. I removed the door and the shelves on the left side of the refrigerator. Then I reframed the opening using the material from the old shelf this made a 12 inch wide opening to the left of the refrigerator. The new had a mounting flange I had to reposition this flange back about 1 inch to get the door to work out flush with the edge of the step down area. I cut and plugged the old gas line and relocated the 110 outlet. I also had to make a ½ inch filler strip to fill the gap on the right side of the cabinet.



The new unit was $\frac{3}{4}$ inch taller than the Norcold so I cut the top of the opening to accommodate the taller frame. This still allowed for the drawer to remain all that was required was to reposition the drawer front to clear the frame.

All that was left was to fill the new larger opening that was now on the left hand side where the old storage area was. I thought about just making a wooden door and painting it black to match the refrigerator but then I spied the old refrigerator door. I removed the door and separated the inner and outer panels leaving just the plastic outer skin. I then built a frame the size of the new opening plus 1 inch each way (I had made the opening the height of the old refrigerator door less 1 inch. I placed this frame inside the plastic door skin and then cut off the excess on the left side. Then I drilled a 2 inch hole to mount the old latch and hung it using the old hinges. The new door looks like it was made by Winnie and the completed installation looks like it “came that way”.

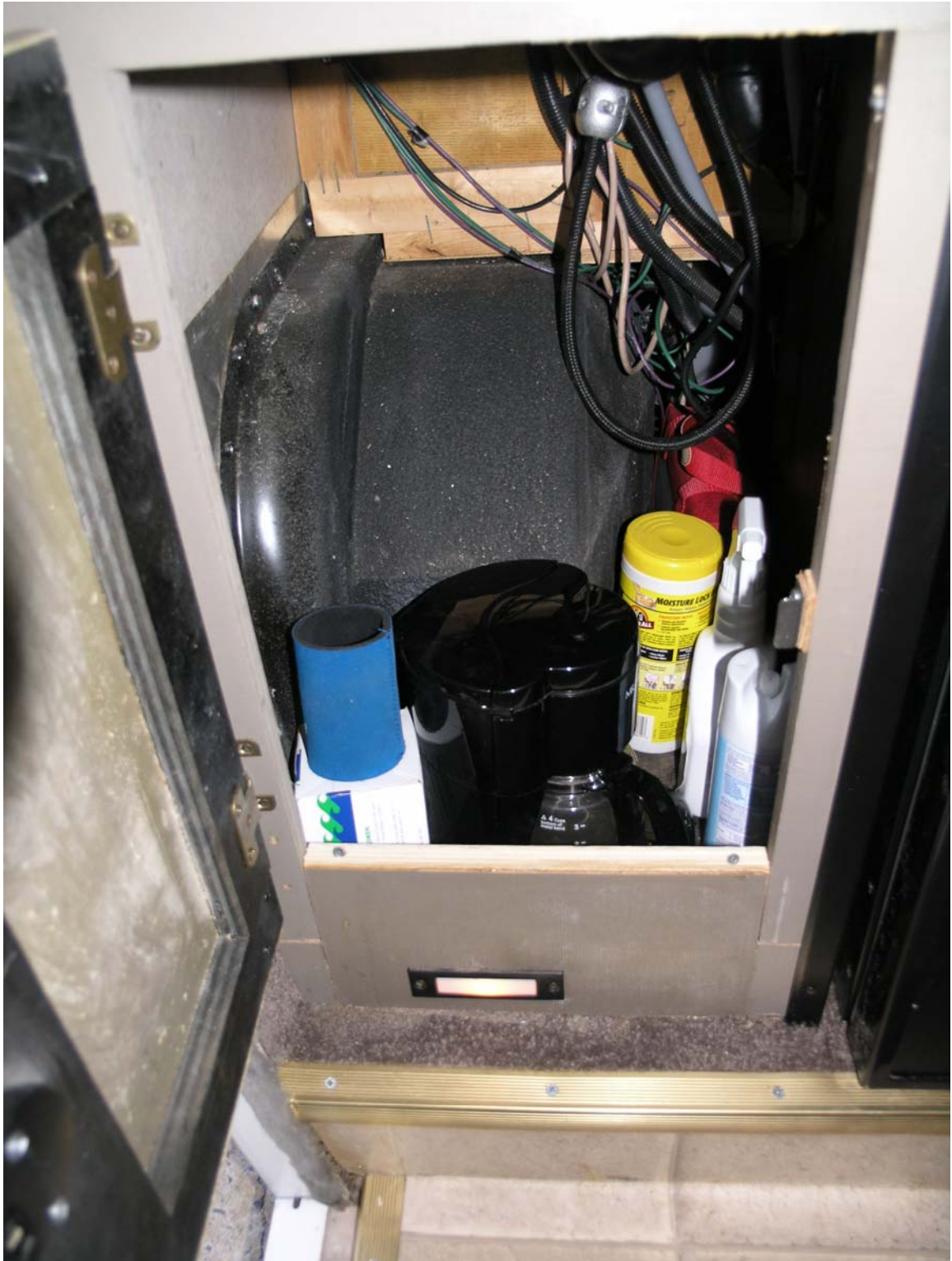
I connected the existing 12 volt wiring to the terminals on the new unit and plugged it into the 110 outlet and screwed the mounting flange in place put the stove back in and that was it. All in all about 5 hours work and only 1 trip to the “POE”



Looks like it came from Winnie



The new door made from the old refrigerator door.



Still have to add a shelf but it is a nice place for the coffee pot!



Nice clean look of all black appliances.



About the same space as the old Norcold but it's got a "REAL FREEZOR" and a LIGHT inside!



Nice shelf space on the door and the middle shelf has an opening for tall containers.



The controls are inside and a green light indicates power on.



Here you can see the inside of the new door made from the old refrigerator door skin.

I also added a new Audiovox GMRS radio system. The system holds 4 GMRS radios and keeps them recharged. These radios are great to communicate with and these units have a 5 mile range. They were another eBay find and I just had to cut a hole in the wall and pick up 12v power from the multi panel.



The lights indicate the charge state of each of the 4 units.



The radios snap into the charger.



These are really handy in places like the MALL!

Well that's all for now have a few things in the works have installed new headlights and will be upgrading them to Xeon soon. The Xeon bulbs use a high power discharge inverter and they put out a bright blue white light. I have the units but I am waiting on the bulbs. You can see more pics and additional information about the restoration check out my website at www.cccgis.com

Enjoy
Robert