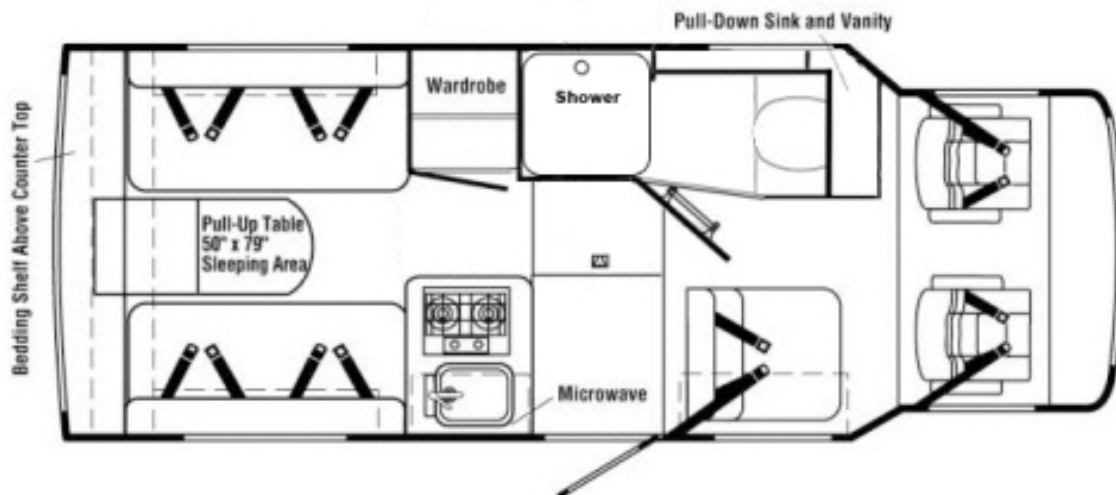


Bathroom Remodel 1995 Rialta Q/D

After much discussion we decided to redo the bathroom in our 95 Q/D. We wanted a separate shower that could be used without disrupting the basic layout of the Motorhome. In 2007 at the Florida Tech Rally I saw a Rialta with an enlarged bath I can't remember if it was done at the Winnebago factory or if the owner had done the work. But it was impressive and the Wife loved the more private bath and large shower. So here we GOOOOO...



First I removed the old bathroom. It was fairly easy to do just a bunch of screws and my screw gun made quick work of the demolition. Along with the sliding walls and the stationary cabinet behind it I removed the holding tank and all the plumbing, including the shower drain pump. Then I took out the second row seats I am also going to but hardwood floor in the front section of the motorhome to match the rear section that I

did several months ago. The old holding tank protrudes out the bottom of the coach by several inches and left a huge hole when it was removed. I plugged the hole with a piece of sheet metal. I also removed the vinyl floor at the entrance because the floor had gotten wet in the past and the plywood had buckled. I wanted to replace all this mess with some hardy board to keep this from happening again. I will also be replacing the removable shower pan area with a storage area for my tools (I currently have them under the rear seat). I purchased a new 24 X 24 X 4 inch deep shower pan and an 8 gallon ABS holding tank. The tank will be located inside beneath the toilet with a 3 inch drain out the bottom. This will let me lift the under coach plumbing several inches to give it some much needed clearance.



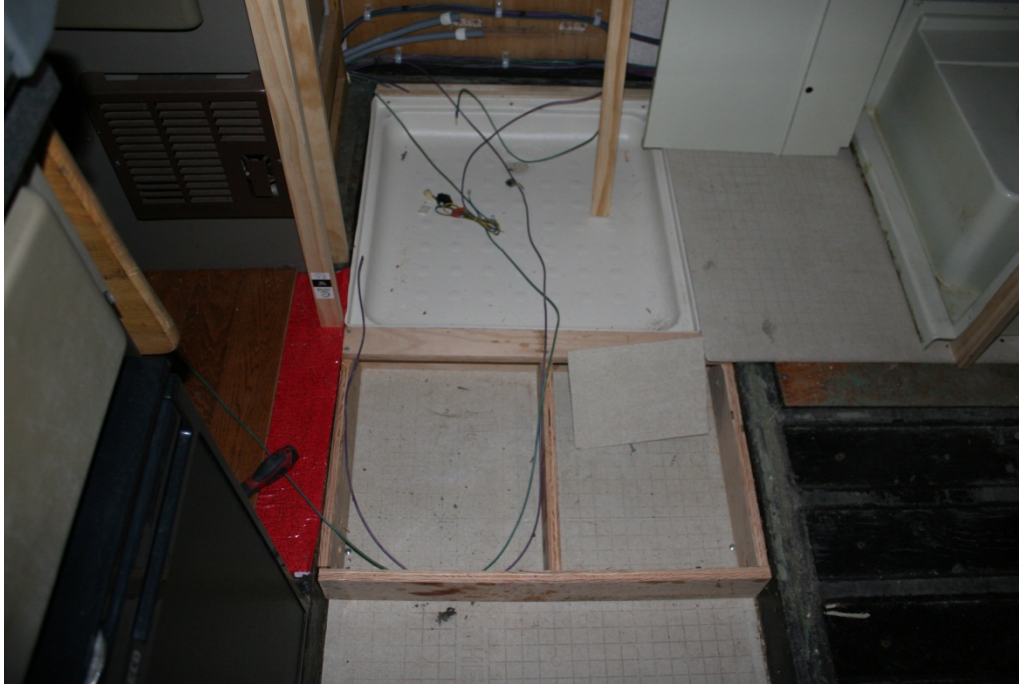
The whole process requires a lot of cutting and fitting as you go. I had several things that I need to work around. The first being the outside shower that I added when I did the major makeover when I first got the Rialta (See the This Old Rialta

pages for details on that project). The shower box will require a new spigot with the fitting on the bottom to make room for the new shower. I found a spigot that has all the connections on the bottom that should fill the bill. The next obstacle was a brace between the cab and the body that is under the flip up storage area in front of the seats. This brace was right in the path of the new storage tank. Since the tank is ABS it was easy to heat with a heat gun and remold to fit around the brace. With the tank in place and a new 3 inch hole cut in the floor I began fitting the toilet riser/tank cover. The tank is covered with $\frac{3}{4}$ inch plywood to give a mounting point for the toilet flange that mounts the toilet to the floor. Once I had the tank and the tank cover location set I could then start laying out the wall positions. I removed the transition panel from behind the driver seat along with the concertone entertainment system. I had to reroute all the wiring that runs down the wall and behind the bathroom. All this wiring will be hidden inside a knee wall in the new bathroom. I had to cut a new notch in the transition panel to allow this wiring to clear the tank and pass into the cab.



I am going to remove the carpet ceiling inside the new bathroom and replace it with smooth plastic. This will keep moisture from causing mildew in the new enclosed bath.





The Hardy Board will give a nice smooth surface to attach the new vinyl flooring and will resist moisture. I am going to use all the molded plastic panels that surround the toilet. I even put a hole thru the floor where the old shower drain was to allow washing out of the toilet area with the hand sprayer.





This is the hookup to the outside shower. This took some work to keep it from protruding too far into the shower. I had to modify the fittings by cutting them off several inches and adding the 90 degree elbows. This allowed the shower walls to just clear the plumbing.

After looking at this setup I decided that if I ever had a leak then I would have to remove the shower to get to these connections. So I moved the tee's to a location behind a panel next to the toilet.



All the wiring that feeds the front along with the wiring running from the cab ran in a chase beside the rear seat. This wiring had to be relocated to allow room for the holding tank and the toilet. You can see the 3 inch hole cut in the floor for the black water tank dump. The white pipes will run to the sink and the toilet both hot and cold must be extended to this area.



Next up was to relocate the toilet surround. Since it is now located in the shorter part of the Rialta I had to cut off 5 inches from all the panels. I also cut off the left panel to allow for the window. The new tile was put down first and it runs under the toilet. The new wallpaper was installed and a shelf was made using a section of the plastic wall panel.

Only about 3 inches of the window is covered by the toilet surround and a small filler panel closes the gap between the window. The new smooth white plastic ceiling material can be seen here. You can also see how tight everything fits. I cut a slot into the radius roof beam but it turned out I did not need it.



I spent a lot of time trial fitting and trying different things to get the most room and the best use of the room I had. The large hole in the transition panel seen here is where the Concertone entertainment system was. It had to be moved because it would be inaccessible once the front wall was in place.



The first wall of the shower going up, the shower walls are covered in Formica. The Formica is glued to the 5/32 plywood backing and laps over the lip of the shower pan. This makes a nice water tight cabinet that will be easy to keep clean. Also the Formica is very light and I was trying to keep the weight to a minimum. Speaking of that I only wound up adding around 60 lbs. to

the Rialta. This is because I removed the old sliding shower cabinet, the rear seat and seat frame (that thing weighed a LOT!), holding tank and the furnace (more on that later). Since I reused the toilet surround and the toilet (less some large chunks that I cut off the bottom and sides) I did not add much weight. In total I added less that 2 ½ sheets for 5/32 plywood, a ½ sheet of hardy board the shower pan and about 15 1 by ¾ boards for the framing. Hopefully weight will not be an issue.

I had to order a lot of the supplies online (Home Depot and Lowes just don't cater to RV remodeling all that well). So I spent a lot of time waiting on some critical part to arrive. Once I had all the parts things came together rather quickly.

While standing in the shower pan early on I realized that there was not that much room in a 24X24 inch box. So I decided to use an exterior shower compartment to house the shower head

and the controls. That way they would not take up any room in the shower and you could store the spray head while traveling and not have to worry about it falling off the wall. I found a nice one on ebay that has a sprayer that will lock on it you squeeze the handle tight and then will release with a simple touch. I mounted the shower head on the back wall next to the closet that way I could run all the plumbing inside the closet for easy access.





I also added a LED light strip behind the frosted Plexiglas strip on the side wall to the shower. This gives you lots of light inside the shower. I also put a red LED strip under the shelf just above the toilet paper holder to act as a night light. The switch for these LED's is located where the old pump control switch was. You flip it to the right for the shower and to the left for the night light. I also put the wall mounted light back

where it was located just inside the door.

I HATE SHOWER CURTIANS! They are messy and will mildew easily inside a confined area. So I decided that I was going to have a shower door. I found some clear Acrylic hinges on line and used them along with a piano hinge to fabricate a shower door out of ¼ inch Plexiglas. The door is a bi-fold arrangement that swings both out of and into the shower. One leg of the door is short (about 8 inches) while the other is around (16 inches) this makes the door form a 45 degree angle that keeps the corner of the door inside the shower pan. The long side snaps behind the short wall on the right of the shower and also stays inside the shower pan. Some clear seals seal the hinges

and a simple L shaped block serves as a locking device to keep the door closed. When traveling you can swing the door into the shower and secure it behind a stop that keeps it from swinging free.



I plan on sand blasting a design into the door at some time in the near future, just trying to get the design approved by management.



For the most part the toilet looks much like it did before. It still has the pull down sink and medicine cabinet above it. I did change out the faucet to a bar type since I don't need the shower diverter any longer. Plus the tall faucet allows you to get a glass under it and the type of faucet I used does not splash when you use it.



I got really lucky on the window treatment in the bathroom. I was going to use the old valance but it was about 4 inches to

long. As I was heading out the door I noticed that the valance over the door lacked several inches from fitting tight to the cabinets. So I took it down and it fit perfectly in the bathroom and the old one fit perfectly over the door. A new pleated shade from Lowes and I was happy.



The other thing I lucked out on was the wallpaper. It is a vinyl simulated grass cloth and the colors are perfect. I found it on the clearance rack at Lowes for 5 bucks a roll. I got enough to redo the entire motorhome (at some time in the future).

I made the wall behind the driver removable that way I can get to all the plumbing and electrical wiring that is behind the toilet surround. You can see the new location for the Concertone entertainment system and below that is one of the surround sound speakers. It had to be relocated and removed from its case so it could be mounted in the wall.



The old bathroom door was reused. Here you can see how much room is taken up by the new bathroom. The new bathroom is 27 inches by 63 inches. And 2 people can use it at the same time! (One in the shower the other at the sink or on the toilet (if you are close friends....))



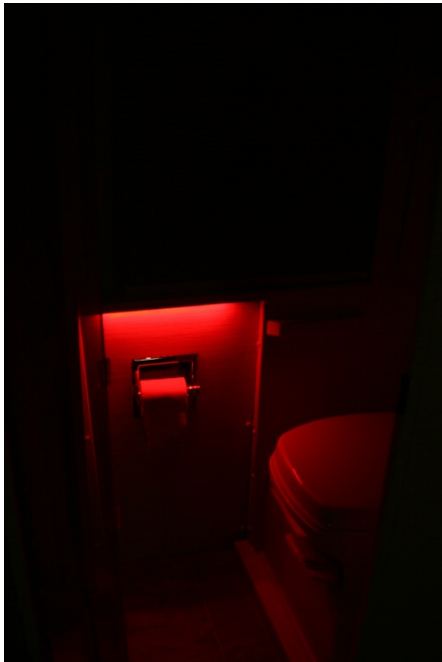




View from my work table. The TV is also a computer monitor.







Well there you have it a couple weeks of work about \$800.00 worth of parts some cusing and a couple nicks and cuts and now we have a bathroom that would rival some class A's. I was reluctant to give up the extra passanger seat but it's only me and the wife (Most of the time just me) that travel in the Rialta. She wanted a nice bathroom and I need a nice bathroom to get ready for work each day I am on the road. I just touched on the highspots of this project there was a lot of little details like getting the tank vent snaked up and thru the roof or relocating the toilet further forward so it would clear the back of the surrond

(remember I had to cut 5 inches off the height of the surround and that made the cutout in the wall behind the toilet too low for the toilet to fit under). I did use some items that made things easier like the braided stainless steel lines running from the Flair-it tee's to the shower, outside shower, sink and toilet. These work great and are much easier to work with than the Plex plumbing pipe.

All that is left is to hook up the outside plumbing. I will have two connections one for the black water and one for the shower/ grey water tank. The shower will dump directly to the ground or into the park's sewer dump. I will have a P-trap under the shower with a drain for winterizing. I will retain the gate valve for the grey water tank. That way I can leave the shower connected to the park dump along with the grey water. When I need to dump the black water tank I can connect the dump line to it and once it has emptied then put it back on the shower/greywater. This will be much easier than trying to re-plumb the waste lines to run to a central dump location.

One thing that I forgot to mention is that I also removed the carpet in the front area of the Rialta (I had already done so in the rear) and installed hardwood flooring. The area that once housed the shower pan for the pull out bathroom now has a hinged door that lifts up to reveal storage for my tools.

SO now what?

I still have a lot of things I want to do to the Rialta but I think this is the last big project for awhile. I plan on upgrading the air bags with a compressor and small tank so I can have on-board compressed air. I do have some HID lights that I need to get installed. I think the next major upgrade will be new seats ours are starting to show there age and have some torn spots in a couple places. I saw a wrecked one on ebay the other day...Wonder what I could do with that?



See Ya! on the road

Robert